

# Teacher Profile 2013 Queensland Graduates

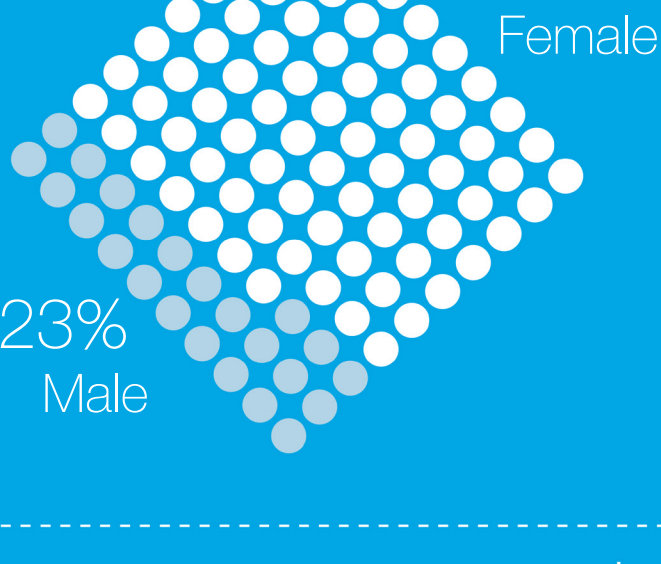
Each year over 3,000 recent graduates from Queensland initial teacher education programs are granted teacher registration by the Queensland College of Teachers.

Understanding who our beginning teachers are can help stakeholders to support and engage them during their important first year in the teaching profession. It can help employers develop workforce policies and strategies that reflect current reality rather than historical practices.

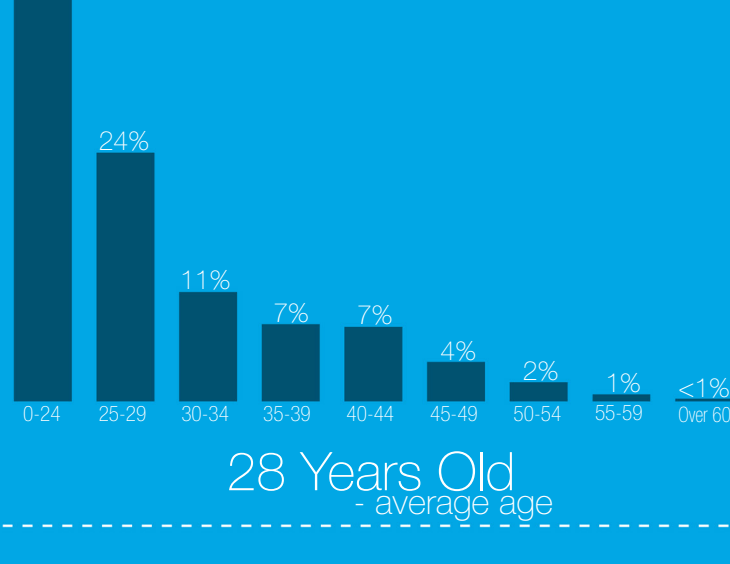
Assisting our teachers to fulfil their potential not only helps to improve student outcomes, it also means teachers have a more satisfying and rewarding career.

This teacher profile gives us a better understanding of who our beginning teachers are.

## Gender\*



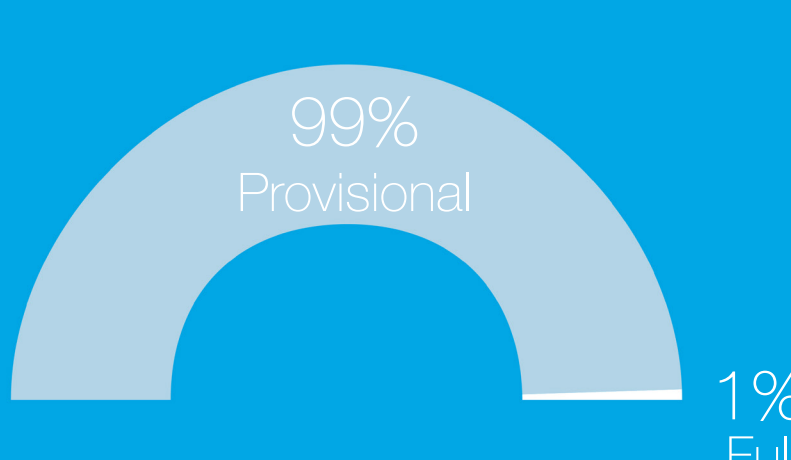
## Age\*



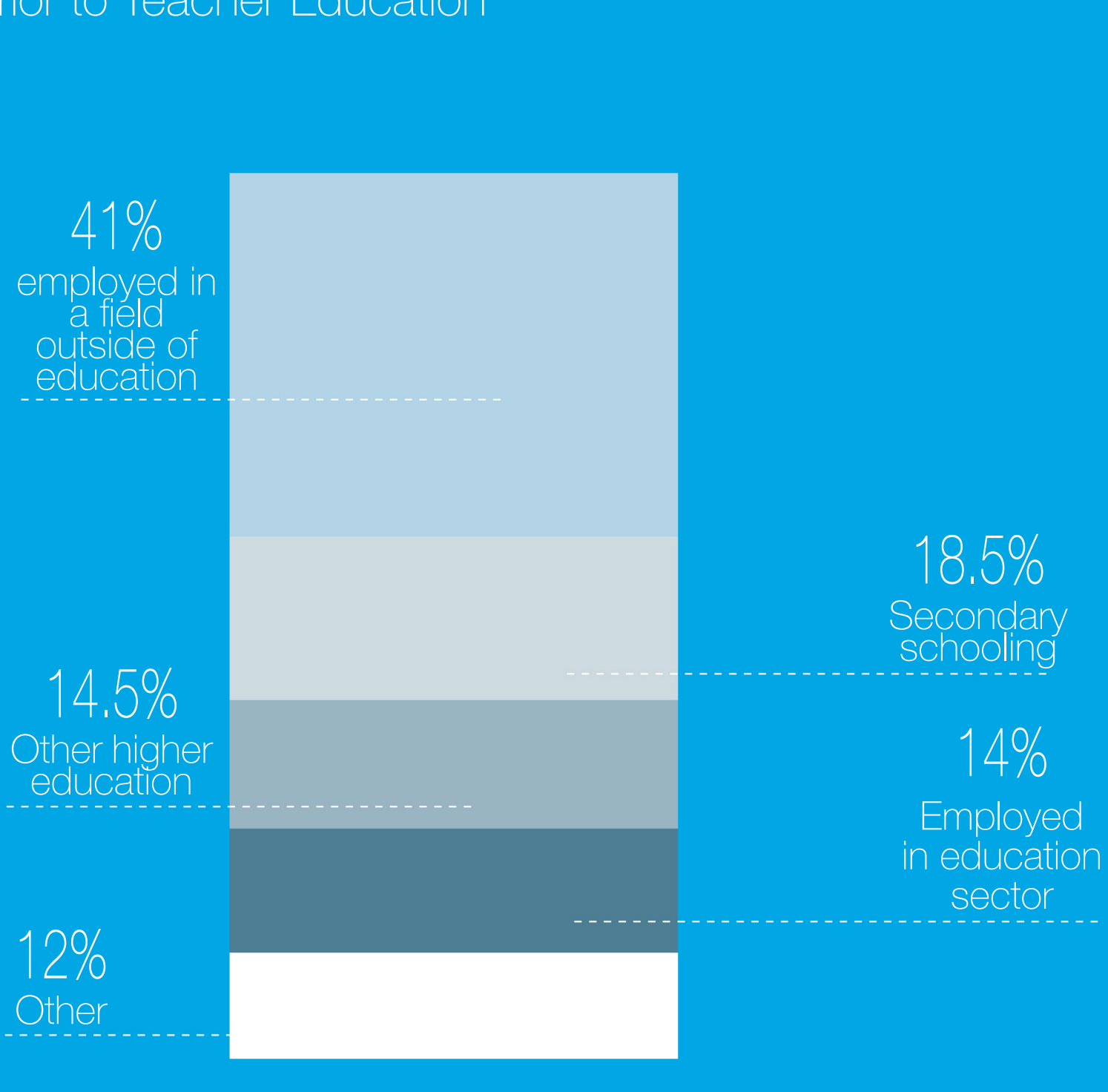
## Location\*



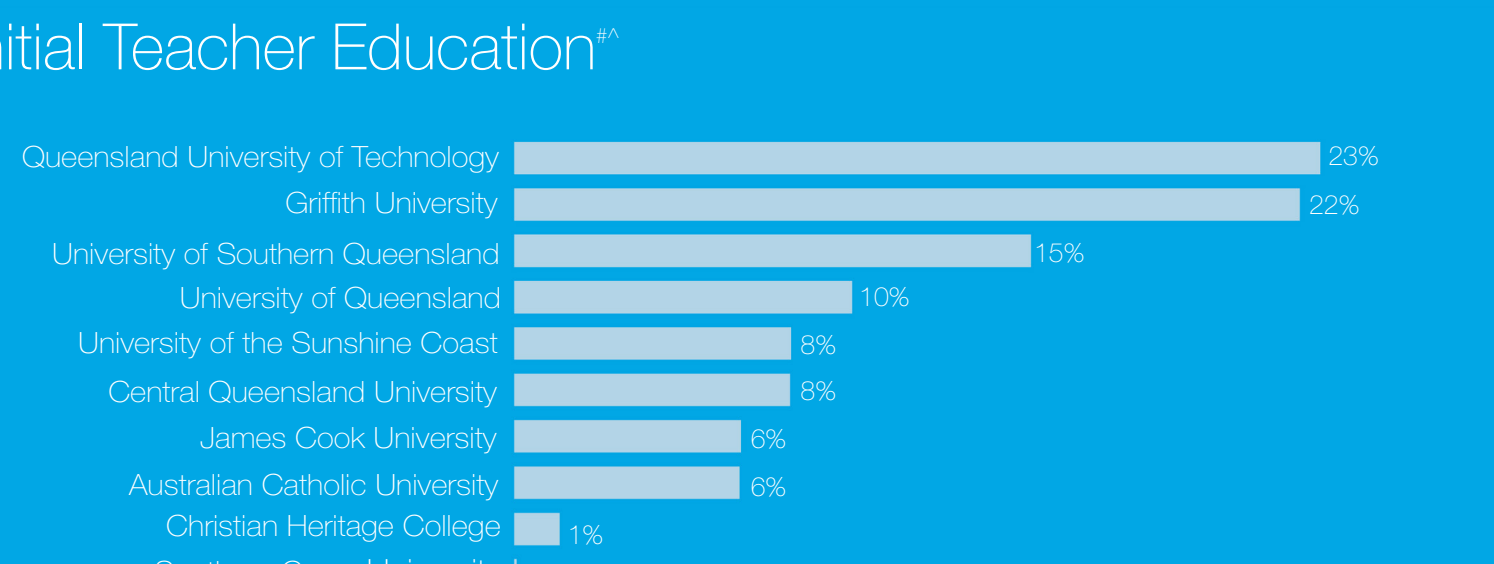
## Type of Registration\*



## Prior to Teacher Education#



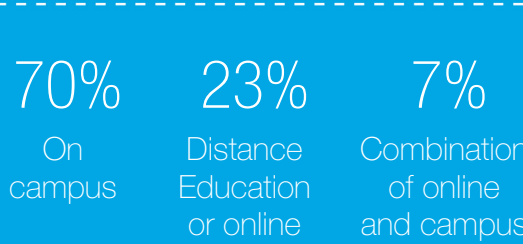
## Initial Teacher Education#^



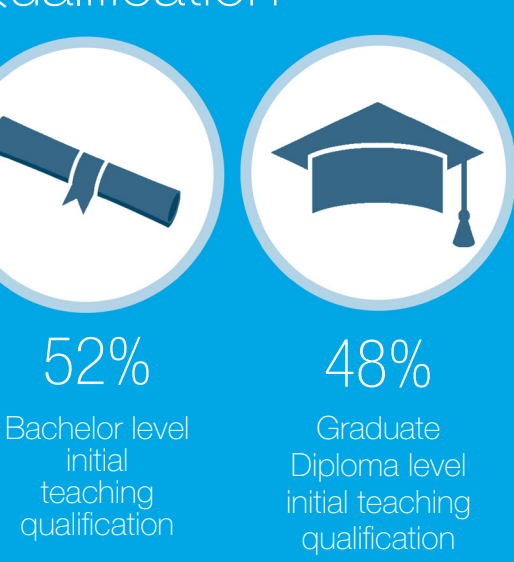
## Mode of Study#



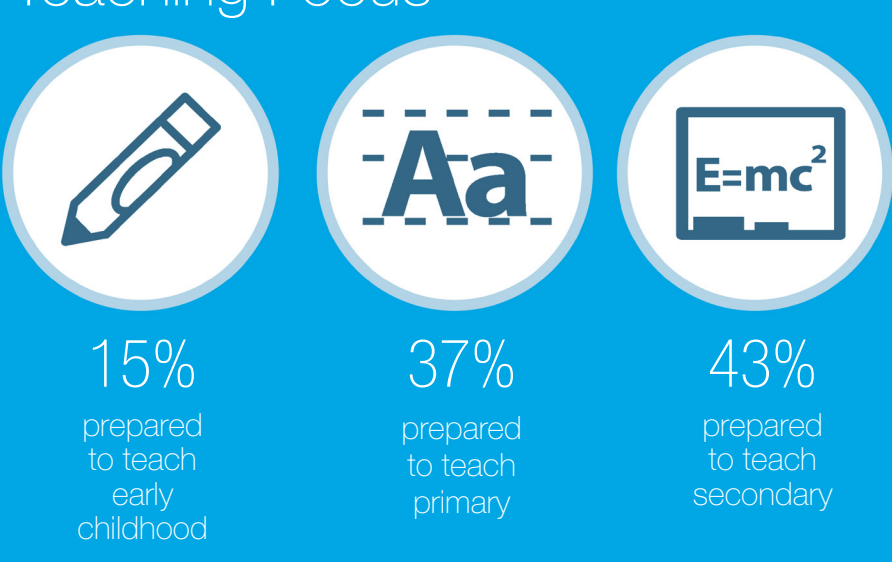
## Mode of Study#



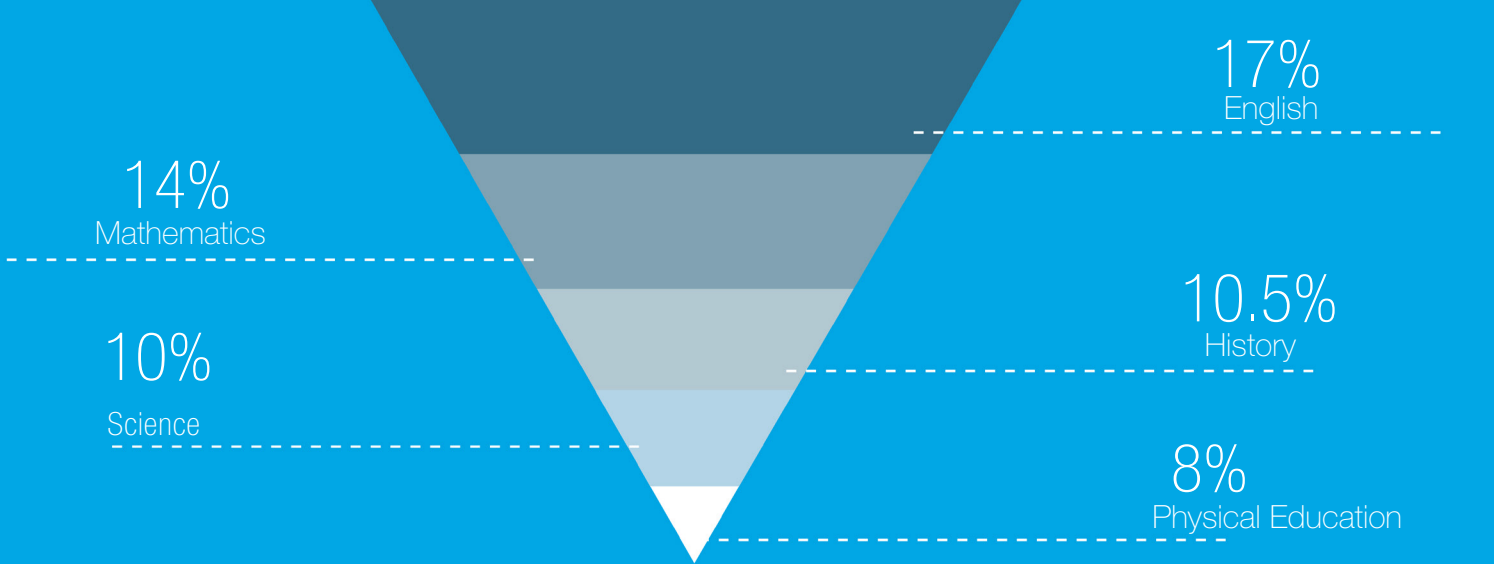
## Qualification#



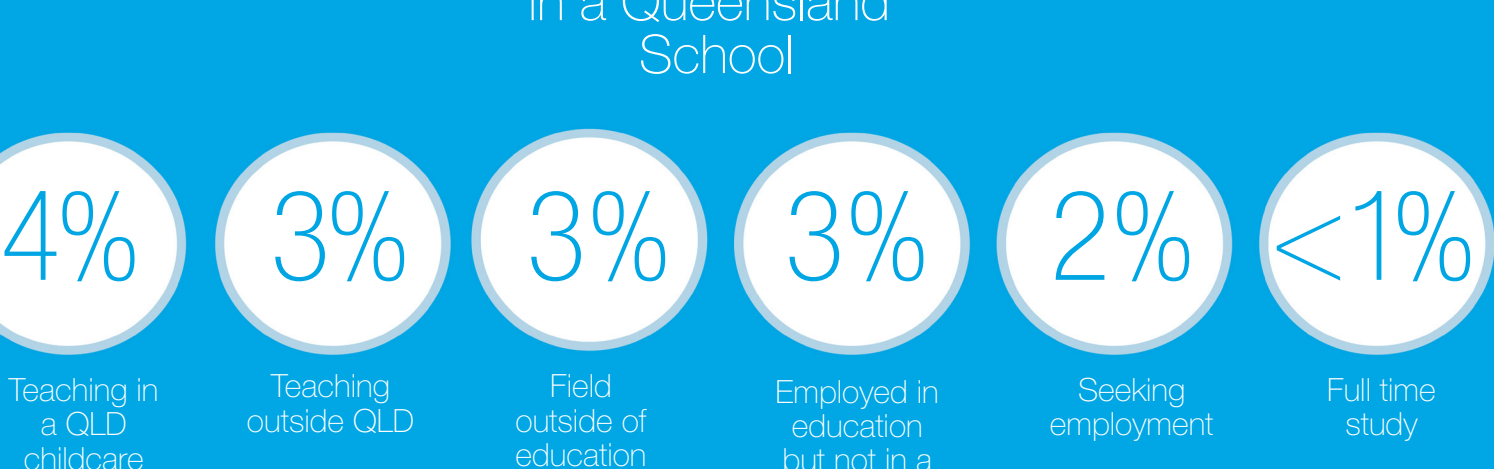
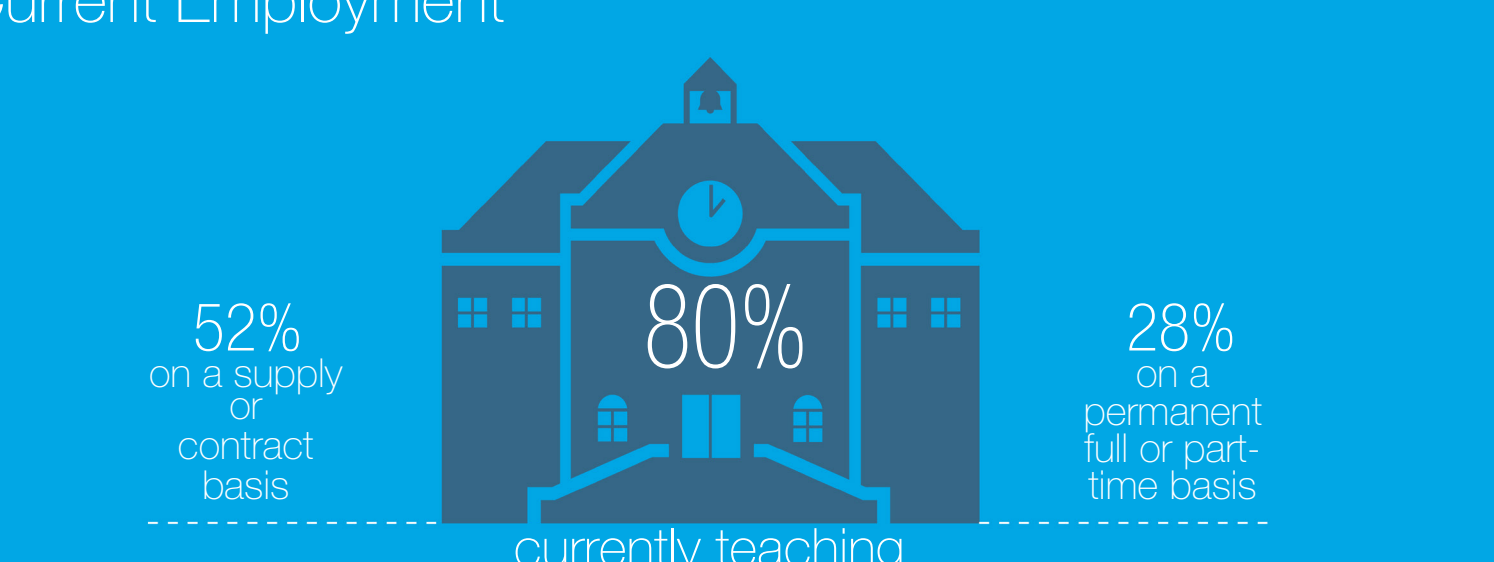
## Teaching Focus#



## Secondary Subject Specialisation# (Top 5)

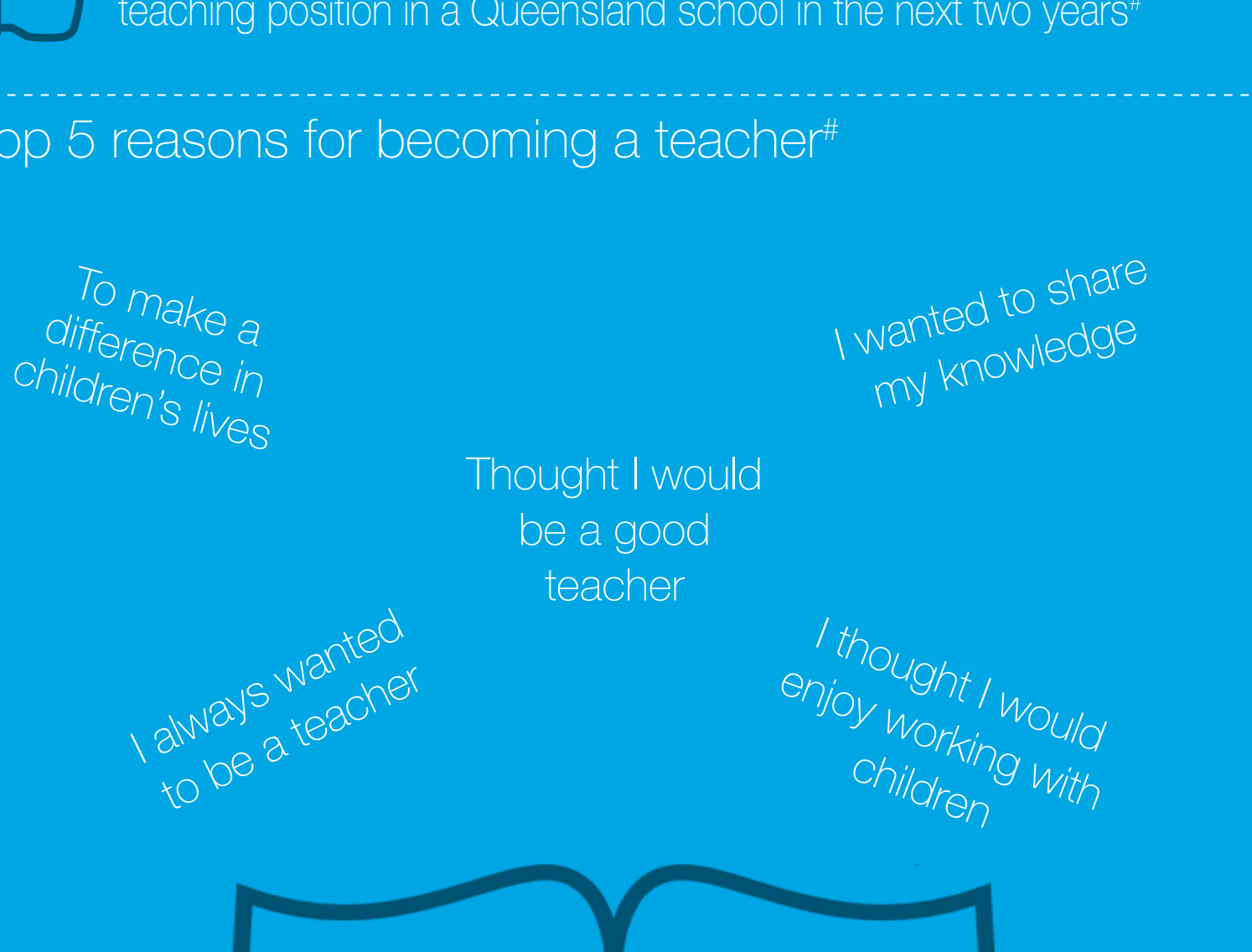


## Current Employment#^



89% are likely to seek or remain in a permanent (full-time or part-time) teaching position in a Queensland school in the next two years#

## Top 5 reasons for becoming a teacher#



"I thought highly of my Physical Education teachers when I was younger, I wanted to be like them one day."  
- 23-year-old male survey respondent

Data Sources  
As of 11 August 2014, there were 3073 teachers registered with the Queensland College of Teachers who completed an accredited initial teacher education program in Queensland between 1 January 2013 and 31 December 2013. \* Existing data from the OCT database - for the purpose of this profile report, the data drawn from the OCT database related to registered teachers who completed a OCT accredited program of initial teacher education between 1 January 2013 and 31 December 2013. # Online survey - registered teachers who completed a OCT accredited program of initial teacher education between 1 January 2013 and 31 December 2013 participated in an online survey conducted by the OCT in October 2014. The survey was delivered to 2990 registered teachers and completed by 376, giving a 12.5% completion rate for the survey.

The survey results identify the respondent's current location, qualification level and subject/teaching specialisation, mode of study, pre teacher education employment/study, OP/ATAR score, current employment situation, likelihood to remain in or to seek employment in a Queensland school in the next two years and the main reasons for becoming a teacher.